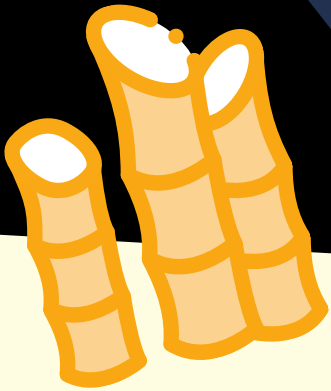
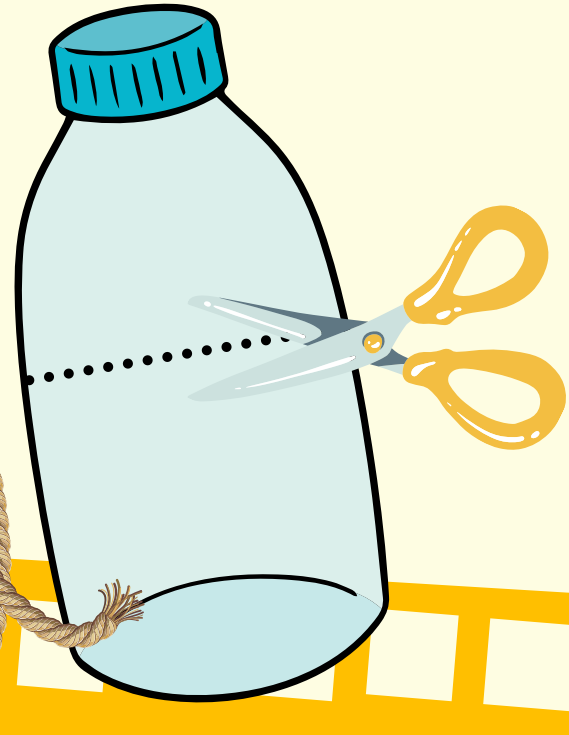


Make a solitary bee nest!

You will need:

A 2 litre plastic bottle
Bamboo canes
Scissors
Nice, strong twine



How to make your solitary bee nest

1. Cut off the top half of your bottle (the end with the lid), so that you're just left with the bottom of the bottle. Don't forget to recycle what you don't use!
2. Next, you need to cut your bamboo canes to the same length as your bottle - you may need an adult to help you with parts 1 & 2, and be very careful with the scissors!
3. Pack your cut bamboo canes tightly inside the bottle.
4. At this stage, why not make some decorations for the outside of the bottle if you're feeling creative? You could draw and stick on some bees, flowers, anything that you like!
5. Tie the twine around the bottle and hang it in a dry, sheltered but sunny spot in the garden

